

Sheet:

01/15/06

5 0 0 - 0 0 - < 0 0 0

Project name : FOUNTAIN @ MASON CREEK BUSINESS PARK  
21732 and 21734 Provincial Blvd.

Description :

UNIT FLOOR PLANS

Scale : AS SHOWN  
Date : 06-09-2005

Project # : 05-050-0118

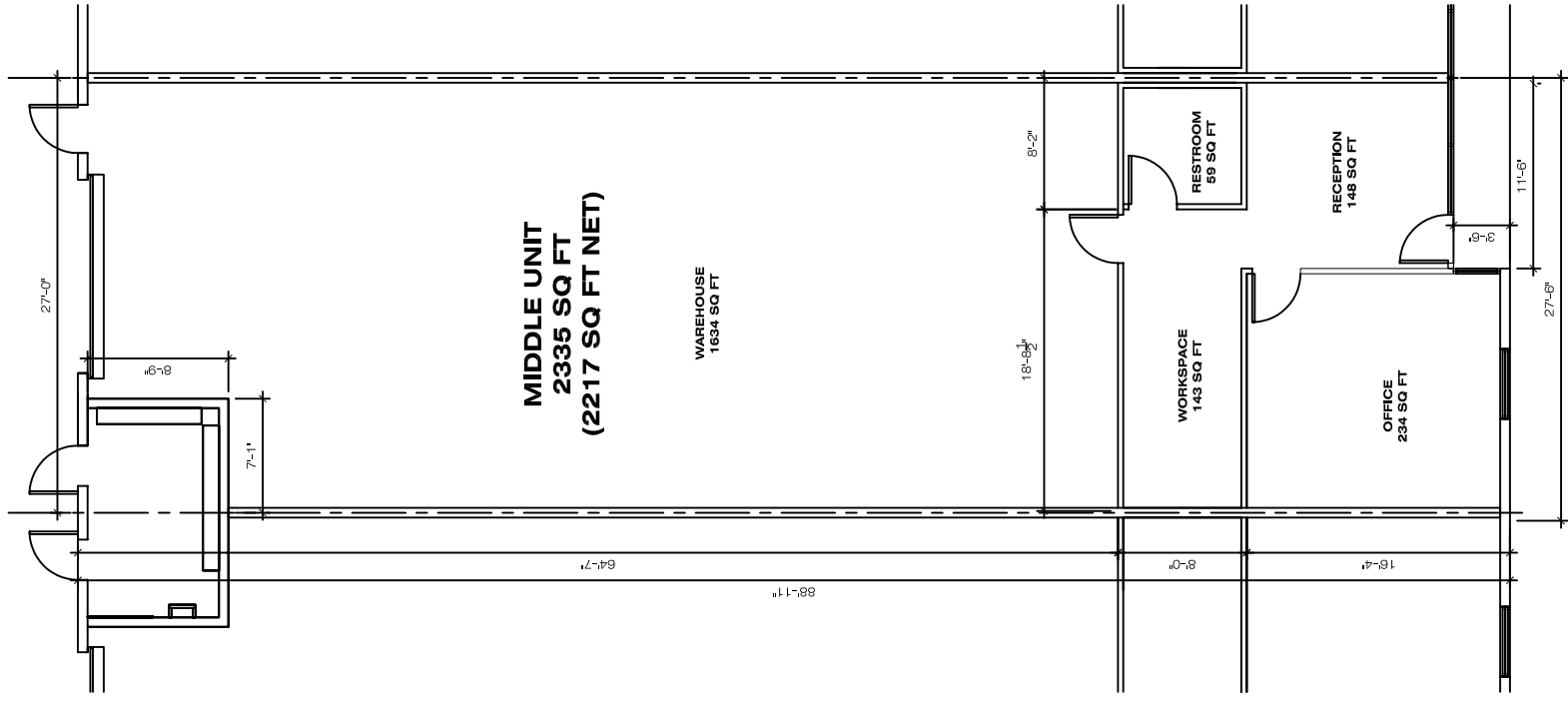


**INNOVATIVE  
ENGINEERING  
DESIGN**  
Ashford Crossing II  
1880 S. Dairy Ashford, Suite # 425  
Houston, Texas 77077  
Tel : (832) 327-0701  
Fax : (832) 327-0706

**DAN Design**  
7707 Bellaire Blvd.  
Houston, Tx 77036  
Phone : 713-988-8116  
Fax : 713-988-8117  
*All work appearing herein has been reviewed.*

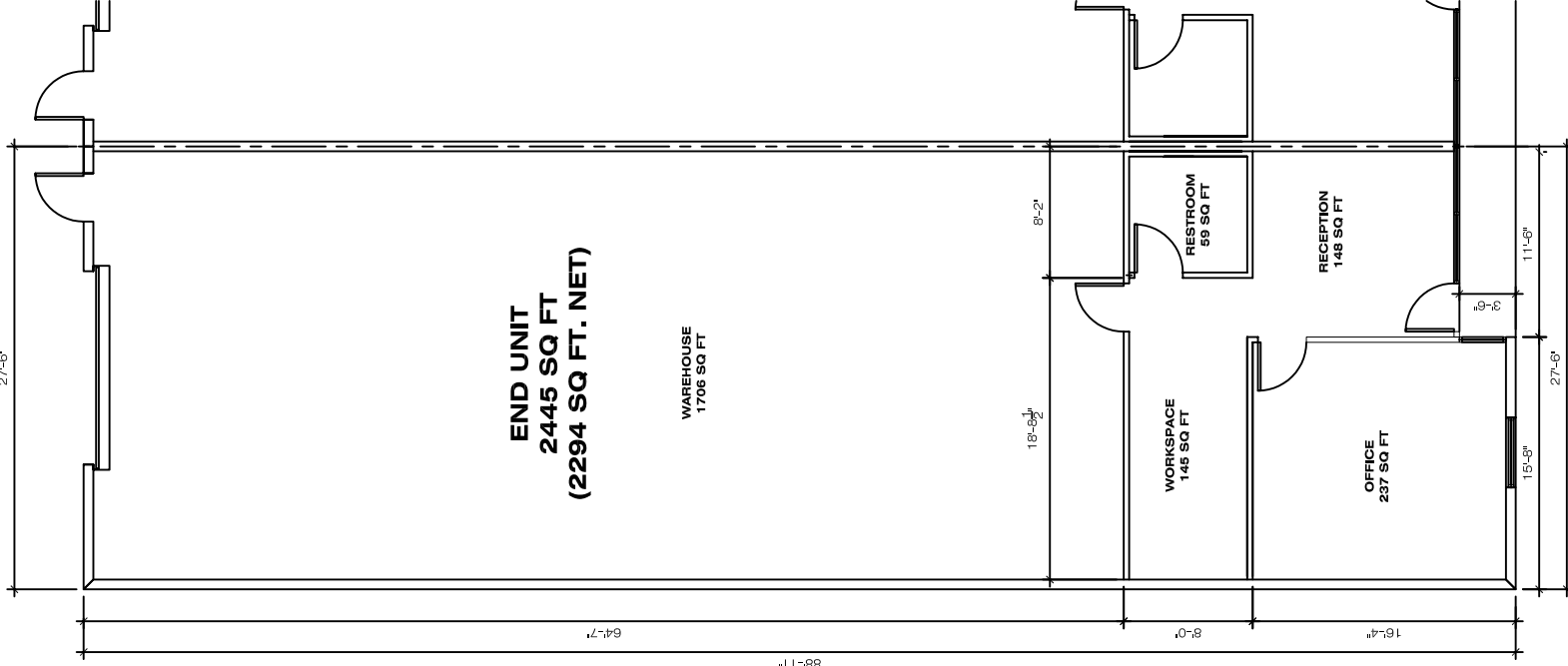
### MIDDLE UNIT FLOORPLAN

SCALE: 1/4"=1'-0"



### END UNIT FLOORPLAN

SCALE: 1/4"=1'-0"



### TYPICAL UNIT FLOORPLAN

SCALE: 1/4"=1'-0"

